

ELECTRIC RADIANT TYPE ALUMINIUM HOLDING FURNACE

(EH MODEL)

This electric holding furnace is developed exclusively for aluminium die casting industries. It comprises a preheating chamber, holding chamber, charging molten aluminium chamber and a temperature measuring compartment. The furnace insulation is constructed out of a hybrid of five different types of refractory material.

Automatic in design, the furnace not only saves energy and space, it has in built safety features that controls the temperature of the furnace chamber and molten metal as well as monitors the melt level.

Some of the remarkable characteristics of this furnace include: -



SUPERIOR ALUMINIUM MELT QUALITY

This furnace is installed with "Silicon Carbide "Electric Heaters which do not generate oxidation and suppresses gas absorption to lower than 0.2 cc per 100 g of aluminium.

LOW ENERGY COST

Thermal efficiency in electric furnace is very high compared to conventional burner-type furnaces.

SUPERB WORKING ENVIRONMENT

This furnace dose not generate noise, radiant heat and gas.

LOW MAINTENANCE COST

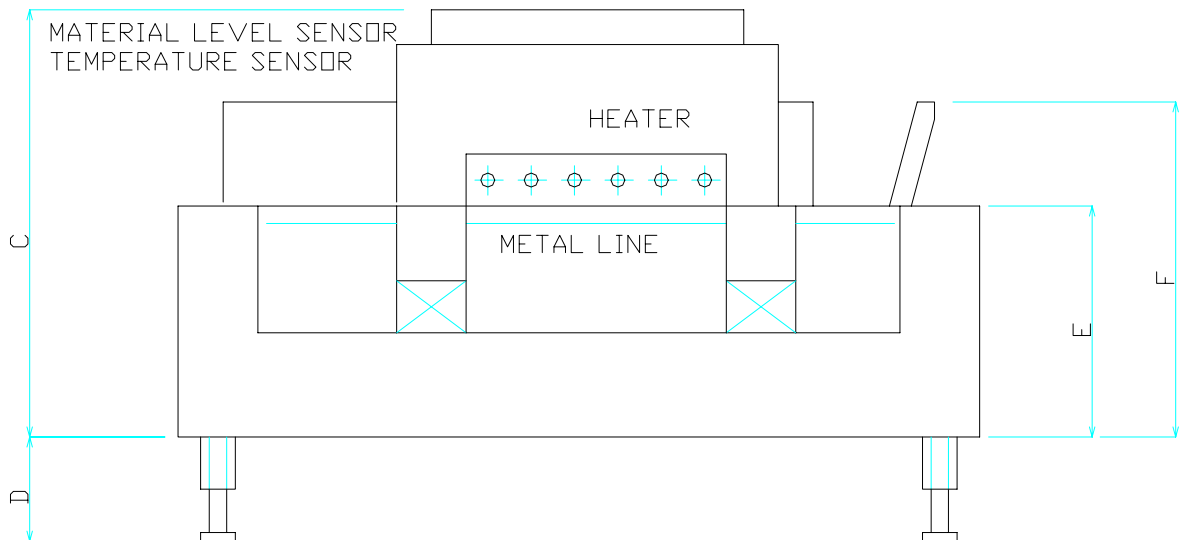
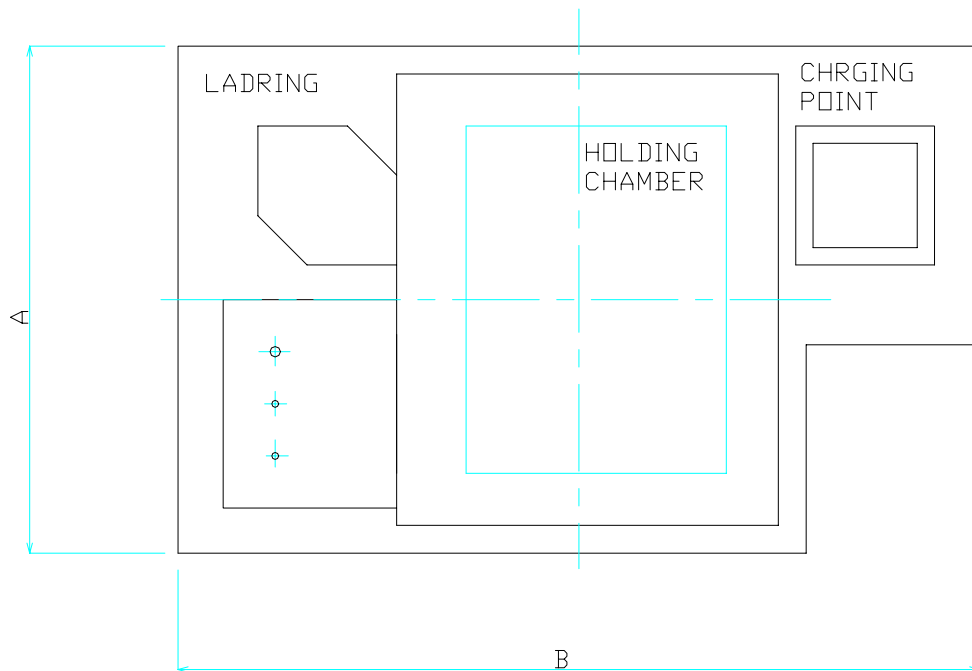
Built to withstand harsh conditions, it is possible for the furnace to be free of repairs for more than 4 years.

"BATH TUB" DESIGN

With a "bath tub", the furnace refractories are cast in one operation without any joints. Since there are no joints during refractory casting, it will be difficult for molten aluminium to penetrate and damage the furnace refractories.

EH FURNACE SPECIFICATION

TYPE	EH-400	EH-500	EH-700	EH-800
Holding capacity (kg)	400	500	700	800
Electrical power (KW)	8	9	12	12
No. of heaters (PCs.)	7	8	9	9



EH Furnace Dimensions

	EH-400	EH-500	EH-700	EH-800
A	1140	1260	1430	1460
B	1560	1710	2155	2310
C	1195	1230	1230	1230
D	HIGHT CAN BE MADE ADJUSTABLE			
E	665	665	665	665
F	965	965	965	965

DAIKI ALUMINIUM INDUSTRY CO., LTD.